

ELIS

Embedded Library Instruction Services

Wisconsin Library Association Annual Conference 2011

Michael Strahan

Associate Professor, Library Science, Olson Library

Judith Puncochar, PhD

Associate Professor, Education

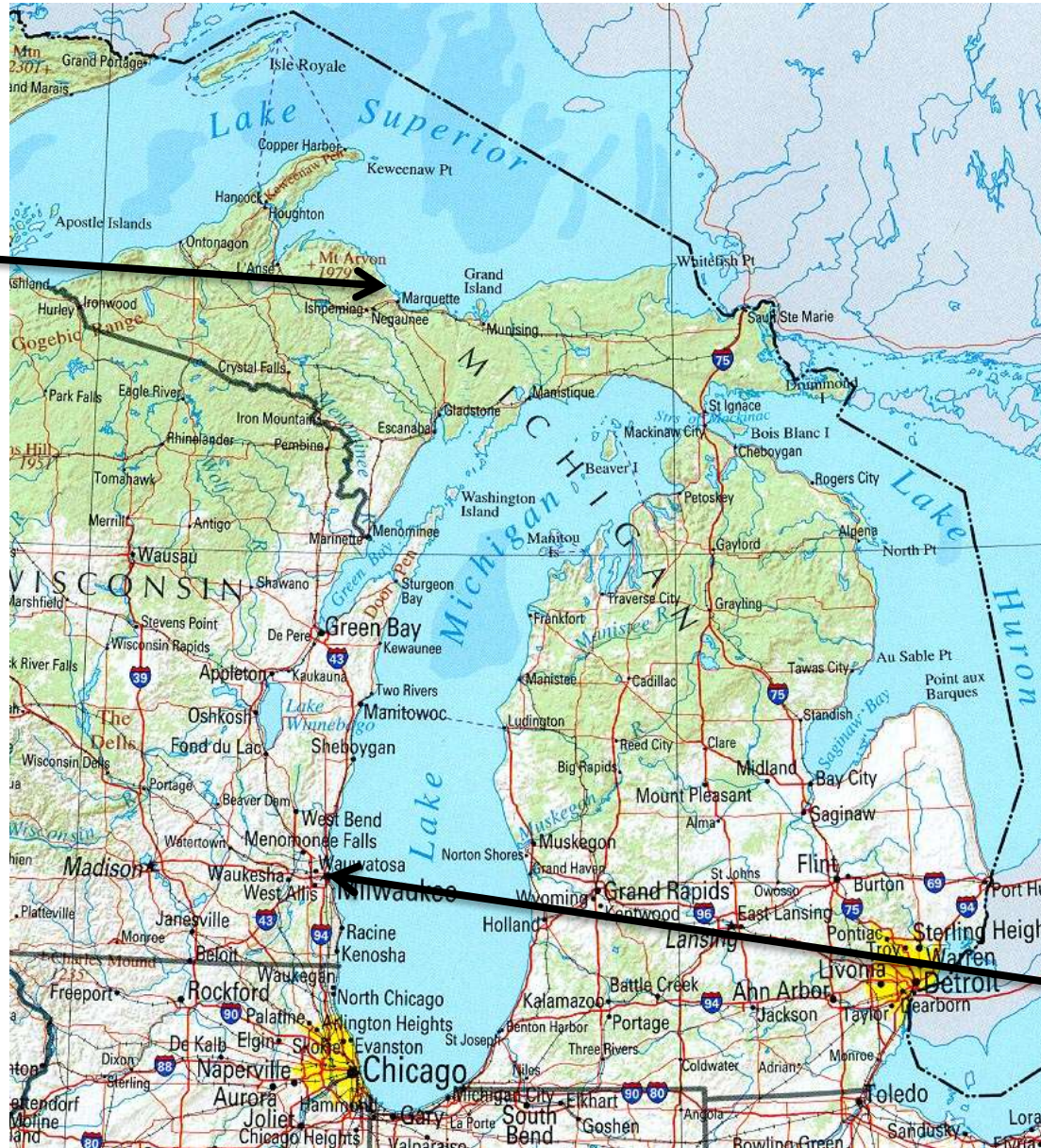
SaraJane Tompkins

Assistant Professor, Library Science, Olson Library

Northern Michigan University

Northern Michigan University

NMU



WLA

What is ELIS?

Embedded Library Instruction Services

- ELIS is the next step in state-of-the-art, personal pro-active library instruction.
- ELIS is available to all types and levels of courses which incorporate EduCat and utilize library resources and services.
- Courses include web-enhanced, hybrid, and online courses from certificate through post-master's degree courses.

ELIS - Embedded Library Instruction Services

Key to Success:

TRUST

between AIS Faculty &
Course Instructor

Strong Team Effort » Success

- Support from AIS Dean (Darlene Walch) & other deans/department heads
- Courses are assigned to AIS Faculty (all 9 librarians + archivist) based upon Library Liaison departments
- Course Instructors/Faculty
- Center for Instructional Technology in Education (CITE)

Evolution of Embedded Library Services in CMS at NMU

2000

- Librarian and Criminal Justice instructor collaborate (Library Instruction and assignments)
- Links to librarian & library guides
- Instructor-created Library discussion threads
- Librarian access to WebCT as "test student" (generic ID)

2004

- Librarians in WebCT as "guest speakers" (real ID)
- Librarian-created Library discussion threads
- Librarian sessions using Mediasite Live streaming
- Embedded expands into other departments including Education & Nursing

Evolution of Embedded Library Services

2006 Summer

Mike & Judy collaborate on permanently embedding librarian in ED hybrid & online classes

2007 Fall

Mike, SaraJane, & Judy collaborate

Mike & SaraJane co-support ED 500A

2009 January

Embedded practices & policies developed and implemented into the ELIS program

Evolution of Embedded Library Services

2009 April

AIS Dean designates ELIS as 1 of 5 Library Strategic Directions for NMU's [Road Map to 2015](#)

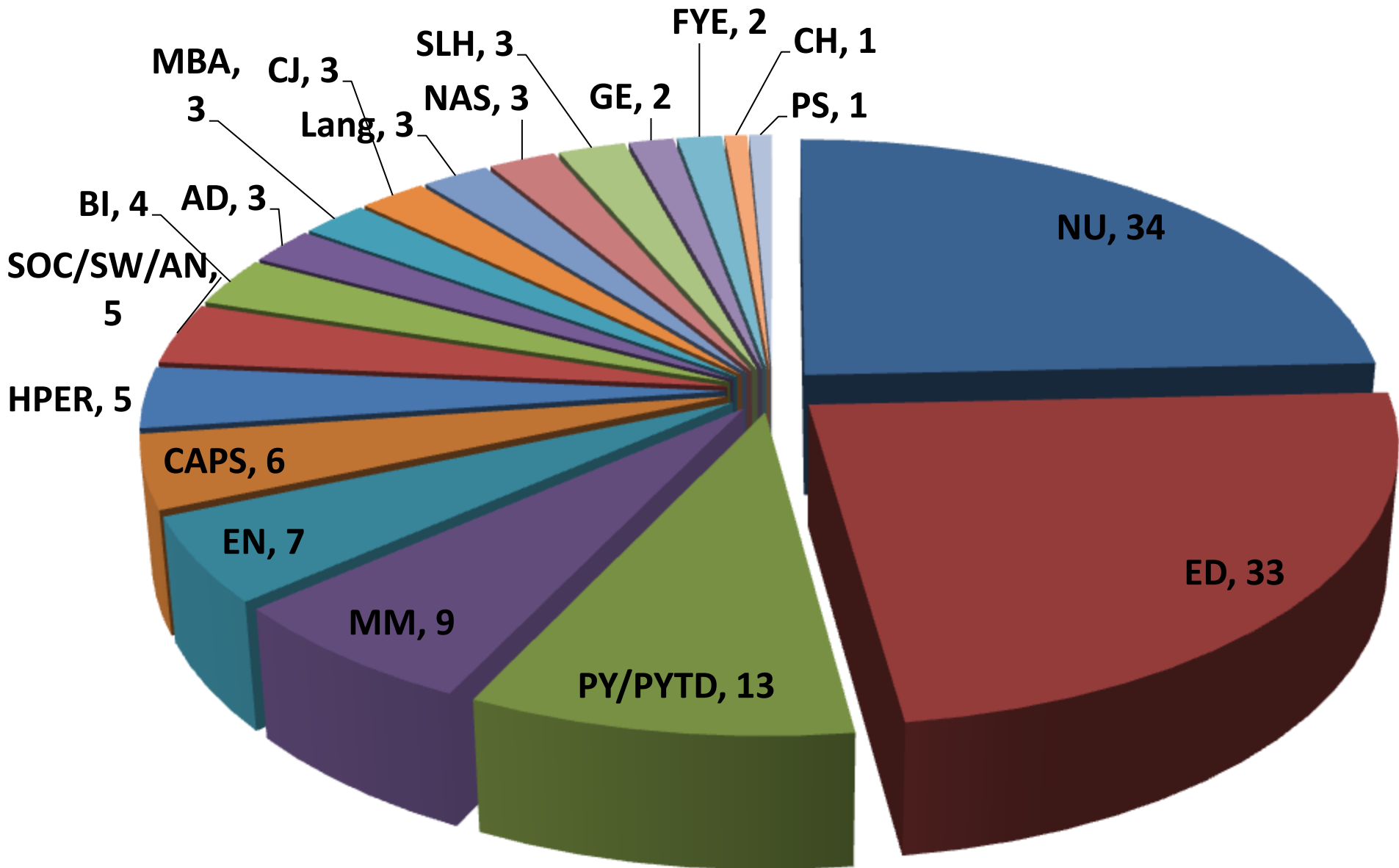
2010 May

NMU implements Moodle™ (branded as NMU EduCat™)

2011 May

ELIS becomes one of the Library's AQIP assessment projects for FY 2012

140 Courses by Department (62% of Departments) with Embedded AIS Faculty between 2000-2011



ELIS Growth

Initially, implementation and promotion through Library Liaison Program departments.

- 2000-2007W: One library faculty member
- 2007S: Two library faculty
- 2009F: Four library faculty
- 2011F: Seven library faculty

Campus-wide promotion Fall 2011

[ELIS Request form for NMU instructors](#)

[Current semester courses with Embedded AIS faculty](#)

ELIS Presence in Fall 2009 (last time WebCT was only CMS)

Total WebCT sections: 948

Total ELIS presence: 17 sections

ELIS presence share of WebCT sections: 2%

Total Library Instruction (incl. ELIS): 130

ELIS portion of LI: 13%

AIS faculty embedded: 4 of 9

ELIS Presence in CMS

Fall 2011 semester (first time EduCat serves as the only CMS)

Total EduCat sections: 1,058

- Total ELIS presence: 78
- ELIS presence of EduCat sections: 7%

Total Library Instruction (incl. ELIS) (projected): 175

- ELIS portion of LI (projected): 45%
- AIS faculty embedded: 7 of 10

Four Elements of ELIS

1. Library Resources & Services
2. Course-specific Library Instruction (Methods of Delivery)
3. Collaboration
4. Needs Assessment

1. Library Resources & Services

1. Online databases
2. Journals, Books, Resources...
3. E-reserve
4. Document Delivery
5. Interlibrary Loan
6. Library Distance Education Services

2. Course-Specific Library Instruction (Delivery Methods)

- Handouts
- Videos
- Library Guides
- Support/Contact Tools
 - Discussion threads / Librarian Question threads
 - e-mail
 - Phone
 - IM/chat
 - Skype
 - Personal on-the-fly videos
 - Library Distance Education Services
 - Virtual office hours
 - Appointment w/AIS faculty member
 - Reference desk

3. Collaboration

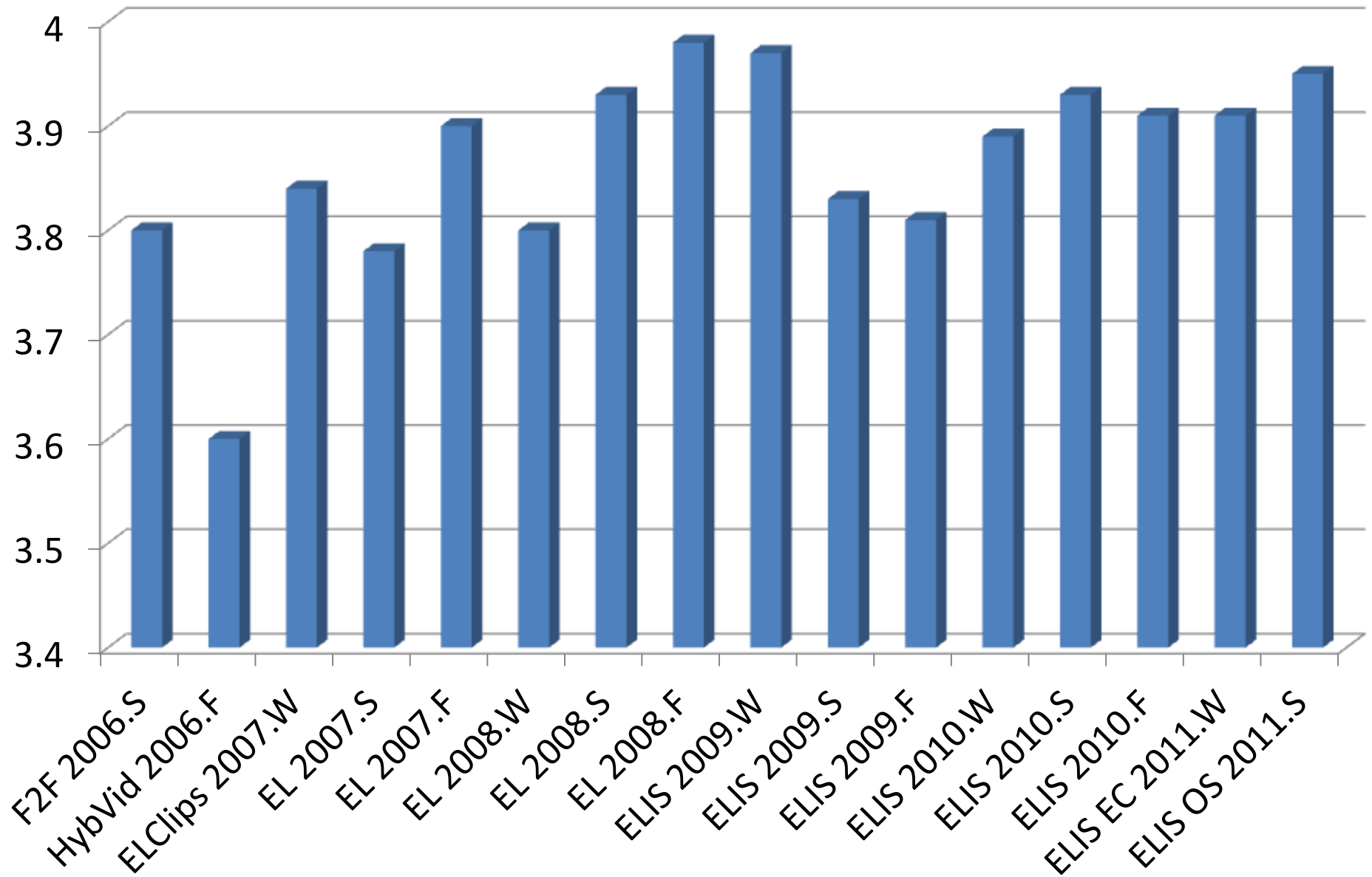
AIS Faculty-Instructor

- Assignments
- APA style and formatting
- Go-to person for problem solving
 - Computer access issues
 - Resource scarcity
 - Instruction in course delivery tools

4. Needs Assessment: Faculty & Student Needs

- **Faculty**
 - Match classroom faculty with AIS faculty
 - Interview faculty for expectations
 - Continuous feedback
- **Student**
 - Class level and structure
 - Syllabus
 - Learning level and abilities
 - Student feedback

Course Evaluations of Instructional Quality



Student Comments

"ELIS was a great resource!"

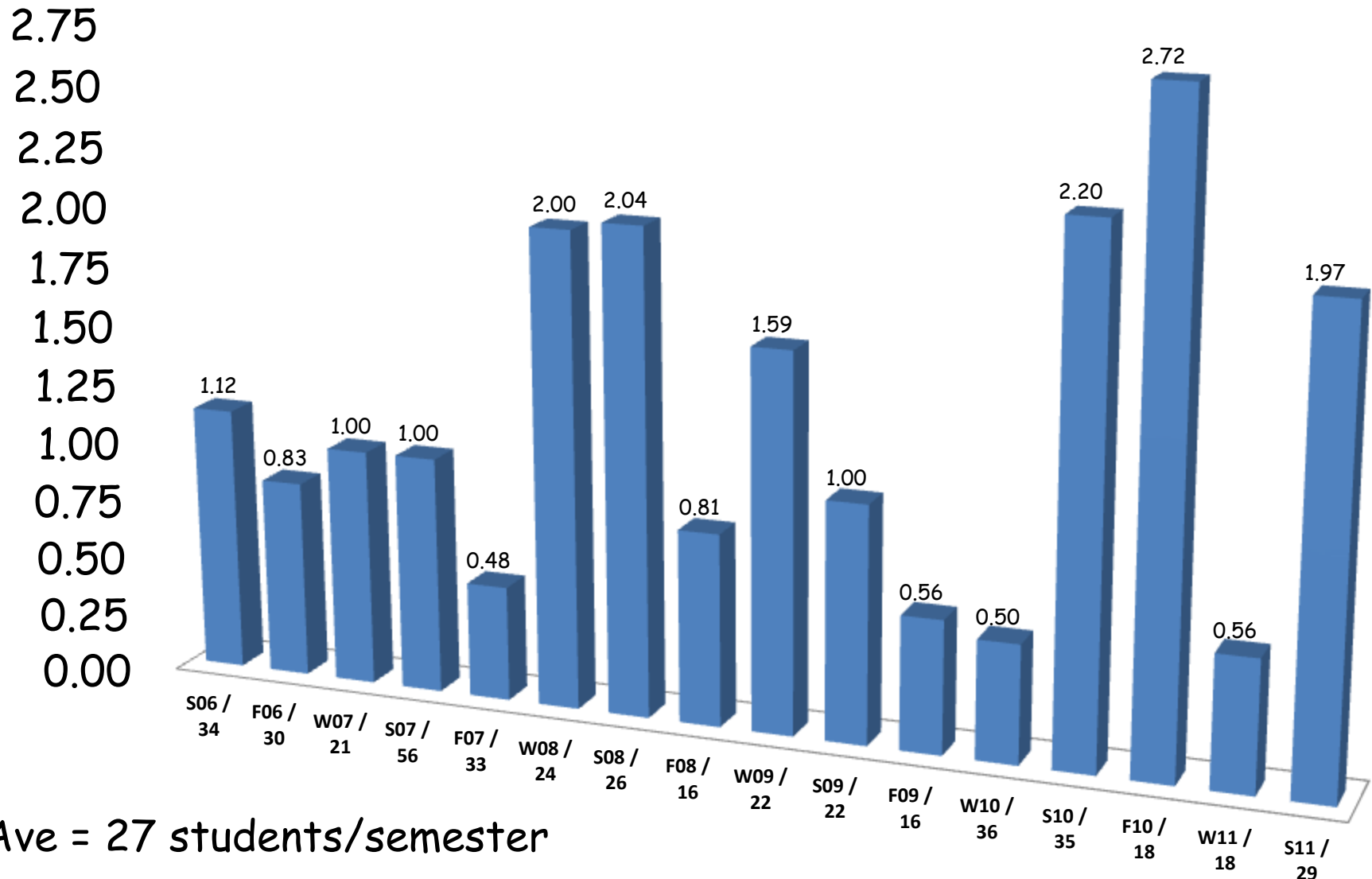
"ELIS was also very helpful."

"Mike was also great at answering questions and giving feedback."

"I found all instructional resources to be practical and helpful."

"The information posted on EduCat (ELIS) was very helpful!"

Ave. Questions Answered by Embedded AIS Faculty per Enrolled ED 500(A) Student during 2006-2011



Ave = 27 students/semester

ELIS Benefits

1. Specific library faculty member provides personal instruction and assistance in the course.
2. Strengthens connection between library, course instructor, and students.
3. Helps new instructors and students become familiar with library resources.
4. Resources customized for individual course assignments.
5. Reduces students' requests for library assistance because library faculty are familiar with assignments.
6. Allows for library instruction in courses unexposed to library instructional methods.


ELIS Costs

1. Learning how to use Course Management System (WebCT, Blackboard, Moodle, Sakai, etc.) from instructor perspective.
2. Initial time to build customized template for each department.
3. Time to add content beyond template to some courses.
4. Checking library discussion postings and perhaps general course postings and announcements.

ELIS Presence in Course Management System (CMS)

- Olson Library Block
 - Customized OneSearch (Summon) widget
 - Style guides, course-specific resources, contacts
- Research Assistance & Style-specific forums
- Embedded Faculty Member Role transitioned from Test Student → Guest Speaker → Embedded
 - Co-designer/instructor
 - Posts announcements

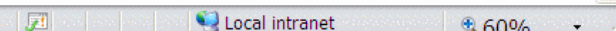
ELIS Module - WebCT (old)

WebCT Campus Edition™ at NMU  Accessibility | Help

Build Student View NE 420 - COMMUNITY HEALTH NURSING AND CONTINUITY OF CARE (THEORY) - NE420AS

Table of Contents for
ELIS: Embedded Librarian Instructional Services - Nursing

- 1 First Task Register for ILL Services
 - 1.1 [Interlibrary Loan \(ILL\) Policies](#)
 - 1.2 [ILL Registration](#)
- 2 Help from your Embedded Medical Librarian, Prof. Mike Strahan
 - 2.1 [Live Chat/IM with Mike \(outside of WebCT\) \(no account required\)](#)
 - 2.2 [E-mail Mike \(write course # in subject\): mstrahan@nmuedu](#)
 - 2.3 [Call Mike @ \(906\) 227-2463](#)
 - 2.4 [Visit Mike at the Library](#)
 - 2.4.1 @ the Reference Desk: Tues. 6pm-10pm; Thur. 5pm-7pm; Fri. 11am-1pm
 - 2.4.2 @ his office (by appointment): LRC 233
 - 2.5 [Ask Mike the Librarian \(Discussion thread--not private\) \[checked TuThurFri\]](#)
 - 2.6 [APA Q & A - Ask Mike / Anna \(Discussion thread--not private\) \[checked TuThurFri\]](#)
- 3 Researching Your Topic (Databases, Resources, & Services)
 - 3.1 Library Instructional Videos
 - 3.1.1 [Community Health Stats \(NE420-W05 sem.\) \(85 minutes\)](#)
 - 3.1.2 [How to Search CINAHL Database \(FORTHCOMING\) \(brief Flash video\)](#)
 - 3.1.3 [How to Search PsycINFO Database \(brief Flash videos\)](#)
 - 3.1.4 [Nurs. Grad. Library Orientation \(2008\) Part 1 - CINAHL, ILL, APA \(98 minutes\)](#)
 - 3.1.5 [Nurs. Grad. Library Orientation \(2008\) Part 2 - Finding Journals Online, Cochrane & STATRef \(62 minutes\)](#)
 - 3.1.6 [Other Videos](#)
 - 3.2 Library Guides
 - 3.2.1 [Health Statistics/Community Health/Epidemiology \(Bookmark this page!\)](#)
 - 3.2.2 [Comprehensive Nursing & Medical Guide w/ Database Links \(Bookmark this page!\)](#)
 - 3.2.3 [Evidence-based Practice Resources](#)
 - 3.2.4 [Nursing Job Hunting & After Graduation low-cost/freely-accessible resources](#)
 - 3.3 Nursing-related Online Reference Sources
 - 3.3.1 [STATRef - Online Medical & Nursing Books + anatomy.tv \(3D anatomy\)](#)
 - 3.3.2 [A Dictionary of Nursing \(2008\)](#)
 - 3.3.3 [The Oxford Companion to Medicine](#)
 - 3.3.4 [A Dictionary of Food and Nutrition \(2009\)](#)
 - 3.3.5 [Gale Encyclopedia of Cancer](#)
 - 3.3.6 [Gale Encyclopedia of Genetic Disorders](#)
 - 3.3.7 [Oxford Reference Online - Medicine & Nursing titles](#)
 - 3.4 Library Catalogs
 - 3.4.1 [NMU Library Catalog \(new 2009 interface\)](#)
 - 3.4.2 [WorldCat \(44,000+ libraries worldwide\)](#)
- 4 NMU Olson Library does not have materials you need?
 - 4.1 [Click here to request articles through Interlibrary Loan](#)
 - 4.2 [Click here to search for & request books, videos, etc. \(not articles\) through MelCat \(sent directly to your local Michigan library\)](#)
- 5 APA Style Tools (6th ed. 2010)
 - 5.1 Zotero - Free References & Research Resources Management browser extension (Firefox, Netscape, Flock) w/ Microsoft Word & Open Office Plugin
 - 5.1.1 [Zotero Information & Download Plug-ins](#)
 - 5.1.2 [Zotero How-to Videos \(FORTHCOMING\) \(brief Flash videos produced by Olson Library\)](#)
 - 5.2 [Mike's APA Quick Help for referencing Nursing materials \(rev. 10/16/09\) - Click F5 to refresh display](#)
 - 5.3 [What's New in the Sixth Edition of the Publication Manual?](#)
 - 5.4 [APA Style Tutorial Videos \(produced by APA\)](#)
 - 5.5 [APA Reference Style How-to Videos \(Brief, produced by Olson Library\)](#)
 - 5.6 [APA Reference Style - Citing in-text \(Diane Hacker\)](#)
 - 5.7 [APA Sample Papers from APA Style web site \(Note: tables & figures are published, not submitted manuscript formats\)](#)
 - 5.8 [APA Captioning & Citing of Tables & Figures](#)
 - 5.9 [APA Referencing article excerpts published in books](#)

Done  Local intranet 60%

ELIS Presence - EduCat basic

Course: ELIS 101 ELIS - Embedded Librarian Instruction Services - ELIS101MS - Mozilla Firefox

File Edit View History Bookmarks Tools Help

Course: ELIS 101 ELIS - Em... +

nmu.edu https://educat.nmu.edu/moodle/course/view.php?id=58&sesskey=1a7kb9JqPD&switch Google

Vger 1 Sq GA GS GR G Vry DS F S CN CB W D G MG DB N A IC s B MY bl EduCat™ L Adp

NMU Olson Library
(generic library block; no library forums)

- OneSearch (advanced search)
- Library Catalog
- Databases: Subject-Specific A-Z
- Library Course Guides
- Library User Guides (APA, MLA, Legal Research, etc.)
- "Ask Us" Research & Searching Help (chat, e-mail, phone, etc.)

NMU EduCat™ powered by Moodle.

You are logged in as Michael Strahan: Student (Return to my normal role)

zotero

Example of ELIS

Embedded AIS Faculty at NMU

in

ED 500(A)

Educational Research

(NMU login only)

Example of ELIS (screen shots)

During the presentation, we demonstrated how ELIS looked in ED 500. Since the course is not accessible to the public, the following 3 slides show the customized ELIS resources in Forums (center) and blocks (right side).

ELIS Presence - EduCat personalized

Course: ED 500 Educational Research - ED500JP - Mozilla Firefox

File Edit View History Bookmarks Tools Help

Course: ED 500 Educational... +

nmu.edu https://educat.nmu.edu/moodle/course/view.php?id=423&edit=0&sesskey=Ia7kb9JqF

Vger 1 Sq GA GS GR G Vry DS F S CN CB W D G MG DB N A IC s B MY bl EduCat™ L Adp

Instructor Contact Information

Instructor: Judy Puncochar
email: jpuncoch@nmu.edu
phone: 906-227-1366

Activities

- Assignments
- Forums
- Resources

Administration

- Turn editing on
- Settings
- Outcomes
- Files
- Profile

People

- Participants

Topic outline

Course Information

- Syllabus: See Page 4 for our course road map.
- Instructor Biography
- Questions, Research Suggestions, and General Information
- Statistics Videos 70 unread posts
- Galvan Tips
- News forum

Important! If your mailing address is 35 or more miles from Marquette, please register for LDES (Library Distance Education Services) to receive materials requested through inter-library loan (ILL).

Ask Mike!

Research without tears: Library Research, Literature Searching, & APA Assistance from Prof. Mike Strahan, your embedded librarian. Personal help is available through ELIS links in Library Block on right, or forums below:

- Research Search Questions
- APA (6th edition 2010) Q & A
- MLA to APA Reference Style Transition Help Sheet
- Course Evaluation

Problems accessing online articles? Download, install, and run NMU's free CISCO VPN software:

- Cisco VPN for Windows
- Cisco VPN for Mac OS X 10.4 or greater

ELIS - Embedded Library Instruction Services

"OneSearch"
This search engine is customized for ED 500 students (i.e., returns results for only scholarly & peer-reviewed English-language research articles). If you see a dragon-looking creature (Shibboleth), log on to continue searching

Submit Query

How to use OneSearch (flash video)

ELIS guide with APA DOI tools

APA guide with DOI tools & extensive examples

Cabell's directory of publishing opportunities in educational

zotero

ELIS Presence - EduCat personalized

Course: ED 500 Educational Research - ED500JP - Mozilla Firefox

File Edit View History Bookmarks Tools Help

Course: ED 500 Educational... +

nmu.edu https://educat.nmu.edu/moodle/course/view.php?id=423&edit=0&sesskey=Ia7kb9Jqf

Vger 1 Sq GA GS GR G G Vry DS F C S CN CB W D G MG DB N A IC s B MY bl EduCat™ L Adp


Discussion forums for Galvan tips and statistics videos are under **Course Information** near the top of our course.

- Directions for Module 1
 - Introductions
 - WELCOME and Introductions
 - Photographs
 - Librarian Professor Mike Strahan
 - Hot Topics in Educational Research
 - ELIS (Embedded Librarian Instructional Services)
 - Confidentiality Statement
 - Confidentiality Statement
 - Time Log (Excel file)

Module 2: What is empirical research?

Discussion forums on statistics videos and Galvan text are near the top of our course.

Directions for Module 2

Click on the video icon to start the statistics videos.  Look for this icon to play FREE video.

- DRY MIX
- Introduction to Research (research process)
 - Part A
- Tips for Evaluating Sources
- Sample Article Critique format
 - Article Critique 1

Google Scholar (NMU version)

Free complete dissertations online

Reminder: Check Library Forums

APAstyle.org Blog

Skype: mike-at-nmulibrary
click here to download Skype

How to Ask Mike! for help

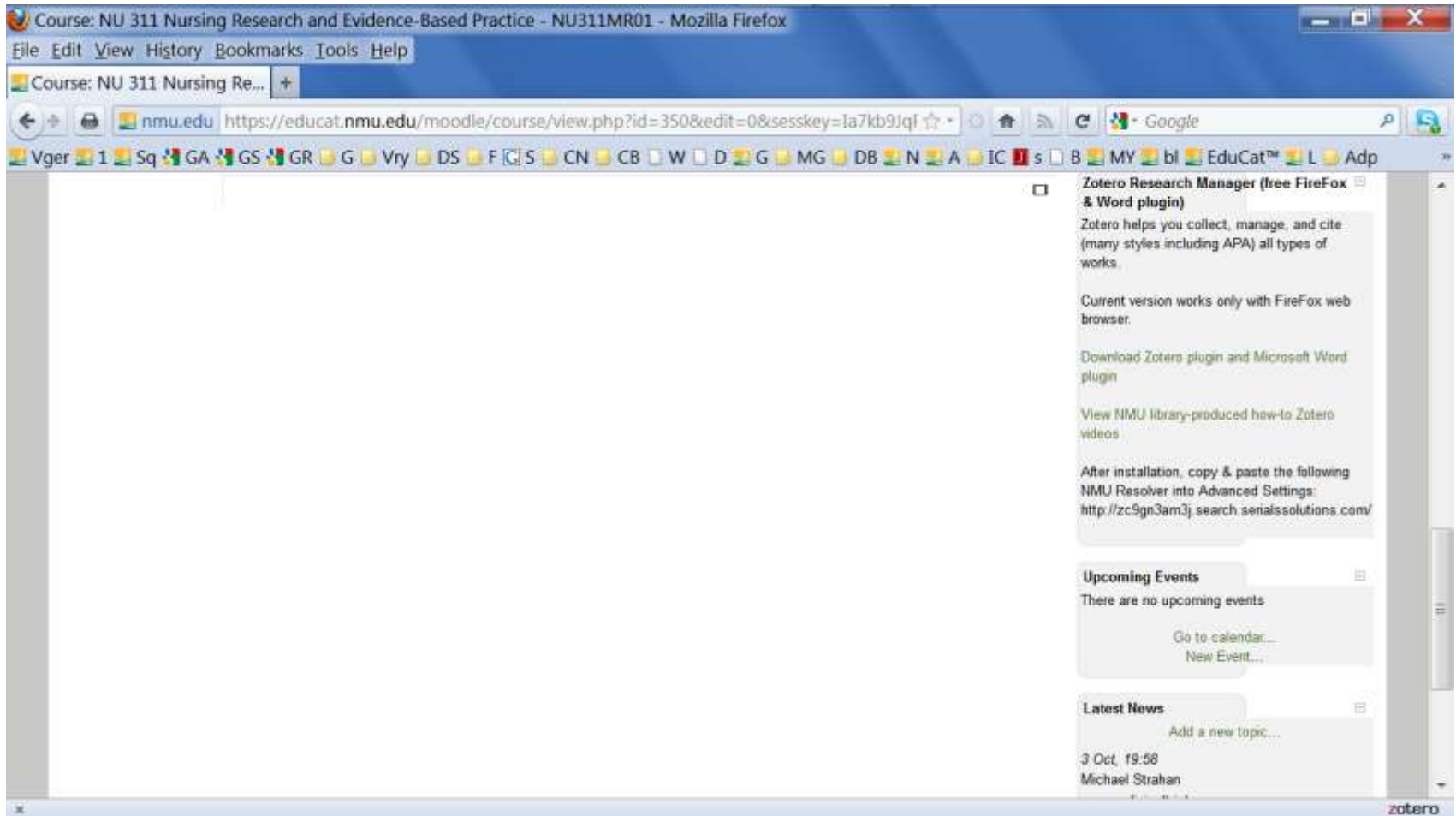
Found a reference which you want to acquire?

Copy & paste the title in the search box below. If you see a dragon-looking creature, log on to continue searching.

Search

zotero

ELIS Presence - EduCat personalized



ELIS: The Future

1. NMU *Road Map to 2020*
2. Olson Library Strategic Direction
3. Assessment using pilot group of nursing courses (F2F - no ELIS, F2F + ELIS, online-only + ELIS)
4. Increase number of participating departments
5. All AIS faculty embedded
6. Add basic ELIS Library Block to ALL EduCat courses
7. Blogs/FAQs in EduCat
8. Unresolved issue of obtaining credit as a co-designer/co-instructor for librarians

Questions?

Michael Strahan - mstrahan@nmu.edu
(906) 227-2463

Judith Puncochar - jpuncoch@nmu.edu
(906) 227-1366

SaraJane Tompkins - stompkin@nmu.edu
(906) 227-2431

Northern Michigan University, Marquette, MI
Thank you!